

## CURRENT STATUS OF POLLING STATIONS

### Introduction

This report summarizes some of the information we currently hold on the polling districts and polling stations for each ward of Plymouth City Council.

Plymouth is divided into 116 polling districts each associated with one of 114 polling stations (two of those polling stations are double).

The report includes maps of each ward as well as short summaries of feedback received from stakeholders for specific polling stations.

### Glossary of terms

**Polling District** - A polling district is a geographical sub-division of an electoral area.

**Polling Place** - A polling place is the area in which the Returning Officer selects the polling station. In Plymouth, polling places represent the same area as the polling district to allow a greater degree of flexibility in deciding where a polling station should be located.

**Polling Station** - The polling station is the room or building where the poll takes place.

## DEVONPORT WARD

Existing arrangements					
Polling district reference	Polling place	Electors	Postal votes	Polling station electorate	Disabled access
AA	Marlborough Primary Academy	1,541	265	1,276	Yes
AB	Salvation Army Hall	2,361	380	1,981	Yes
AC	Keyham Green Places Centre	2,377	439	1,938	Yes
AD	Keyham Methodist Community Centre	1,649	235	1,414	Yes
AE	Mount Wise Neighbourhood Centre	3,026	598	2,428	Yes

**Marlborough Primary Academy - AA**

The 2017 elections brought about representations regarding the location of this polling station within the district, and its poor accessibility for residents in the Pottery Key estate, due to the topography of the area. The polling station is otherwise satisfactory.

**Marlborough Primary Academy - AD**

The 2017 elections brought about representations regarding the location of this polling station within the district, and its poor accessibility for residents in the east of the district. The polling station is otherwise satisfactory.



**HAM WARD**

Existing arrangements					
Polling district reference	Polling place	Electors	Postal votes	Polling station electorate	Disabled access
BA	St. Philips C of E Church Hall	1,522	281	1,241	Yes
BB	Weston Mill Oak Villa Social Club	707	155	552	Yes
BC	North Prospect Library	2,706	479	2,227	Yes
BD	Mobile Unit at Tewkesbury Close	561	90	471	Yes*
BE	Morice Baptist Church	1,703	296	1,407	Yes
BF	St. Pancras Church	3,040	618	2,422	Yes

\*All mobile polling stations used are suitably equipped to enable access for all voters, i.e. ramps and handrails for disabled access. However, there are still ongoing concerns due to inherent characteristics of mobile polling stations, i.e. narrow entrance, limited area for movement.



# ST BUDEAUX WARD

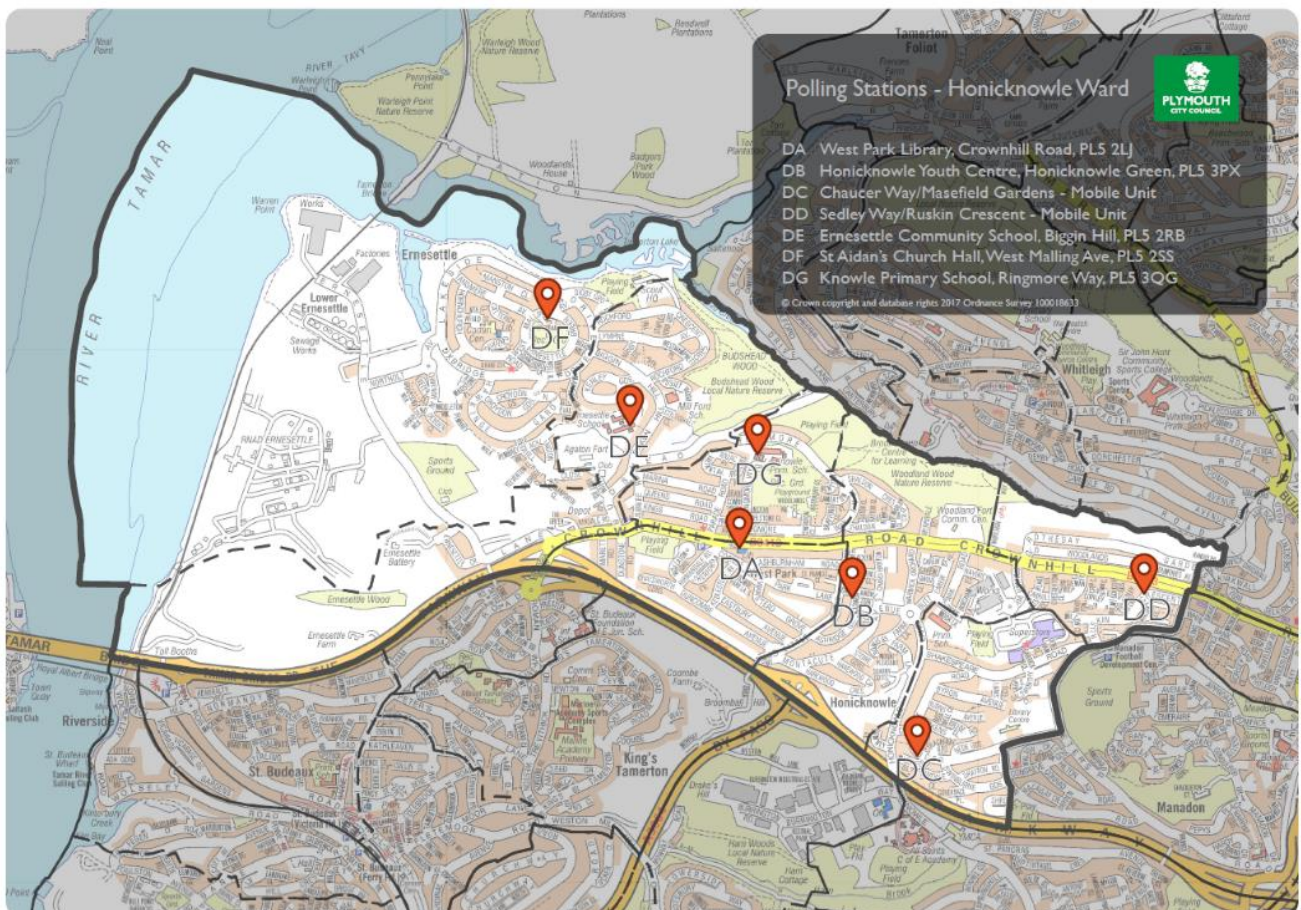
Existing Arrangements					
Polling district reference	Polling place	Electors	Postal votes	Polling Station Electorate	Disabled Access
CA	Tamar View Community Resource Centre	1,901	198	1,703	Yes - ramped
CB	The Barn, Kit Hill Crescent	1,605	356	1,249	Yes
CC	St. Boniface Church Hall	1,913	325	1,588	Yes
CD	Plaistow Hill Infant and Nursery School	830	186	644	Yes
CE	Kings Tamerton Community Centre	2,009	414	1,595	Yes - ramped
CF	St. Pauls Church Hall - St Budeaux	1,589	303	1,286	Yes



## HONICKNOWLE WARD

Existing arrangements					
Polling district reference	Polling place	Electors	Postal votes	Polling station electorate	Disabled Access
DA	West Park Library	1,338	206	1,132	Yes
DB	Honicknowle Youth & Community Centre	1,837	275	1,562	Yes
DC	Mobile Unit at Chaucer Way	1,343	243	1,100	Yes*
DD	Mobile Unit at Sedley Way	1,342	211	1,131	Yes*
DE	Ernesettle Community School	1,208	206	1,002	Yes
DF	St. Aidans Church Hall	2,020	371	1,649	Yes - ramped
DG	Knowle Primary School	1,180	210	970	Yes

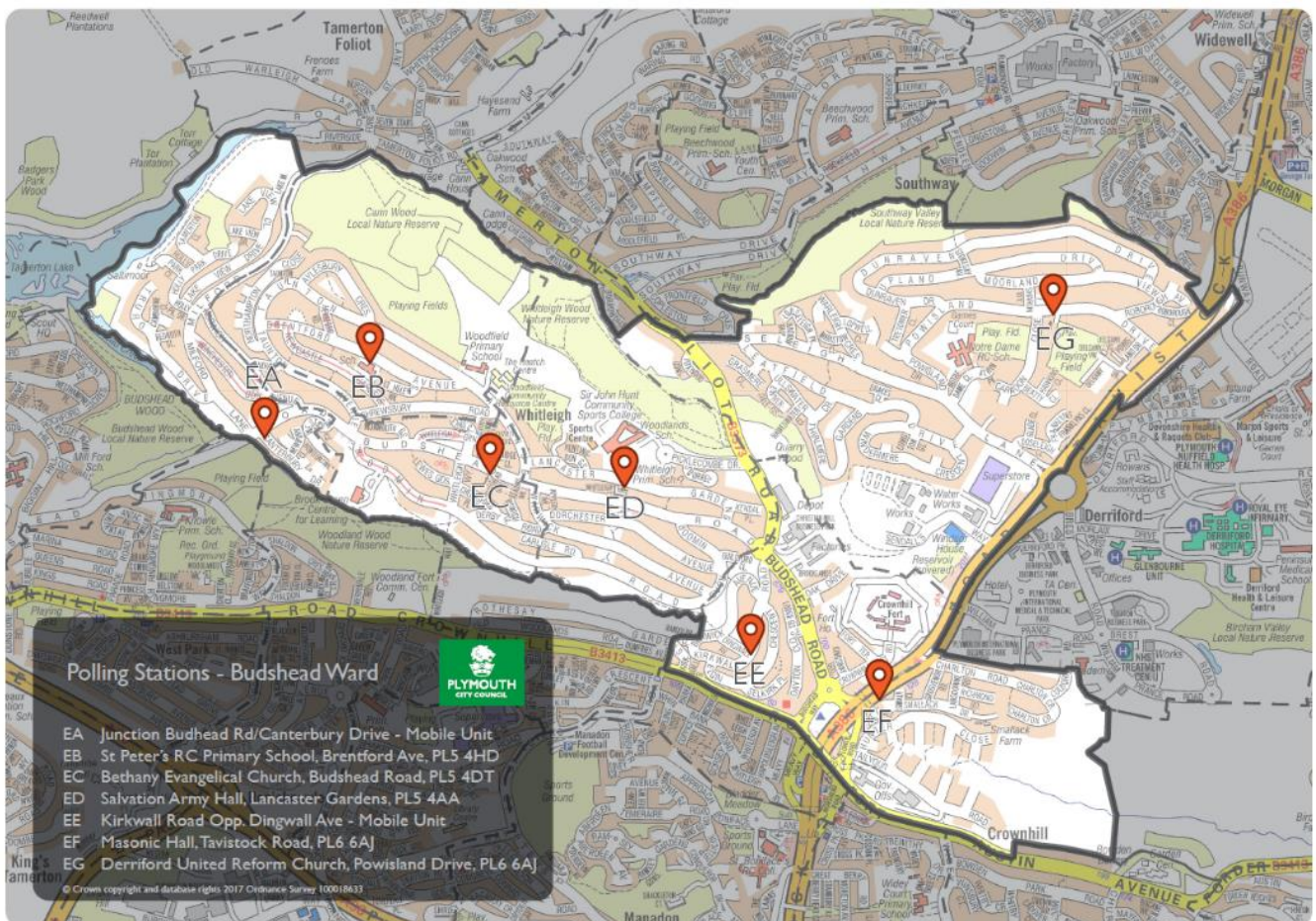
\*All mobile polling stations used are suitably equipped to enable access for all voters, i.e. ramps and handrails for disabled access. However, there are still ongoing concerns due to inherent characteristics of mobile polling stations, i.e. narrow entrance, limited area for movement.



**BUDSHEAD WARD**

Existing arrangements					
Polling district reference	Polling place	Electors	Postal votes	Polling station electorate	Disabled access
EA	Mobile Unit at Canterbury Drive	1,415	272	1,143	Yes*
EB	St. Peters RC Primary School	1,447	243	1,204	Yes - ramped
EC	Bethany Evangelical Church	1,066	185	881	Yes
ED	Salvation Army Community Hall	1,410	293	1,117	Yes
EE	Mobile Unit at Kirkwall Road	739	185	554	Yes*
EF	Manadon Masonic Hall	854	170	684	Yes
EG	Derriford United Reformed Church Hall	2,690	537	2,153	Yes

\*All mobile polling stations used are suitably equipped to enable access for all voters, i.e. ramps and handrails for disabled access. However, there are still ongoing concerns due to inherent characteristics of mobile polling stations, i.e. narrow entrance, limited area for movement.



## SOUTHWAY WARD

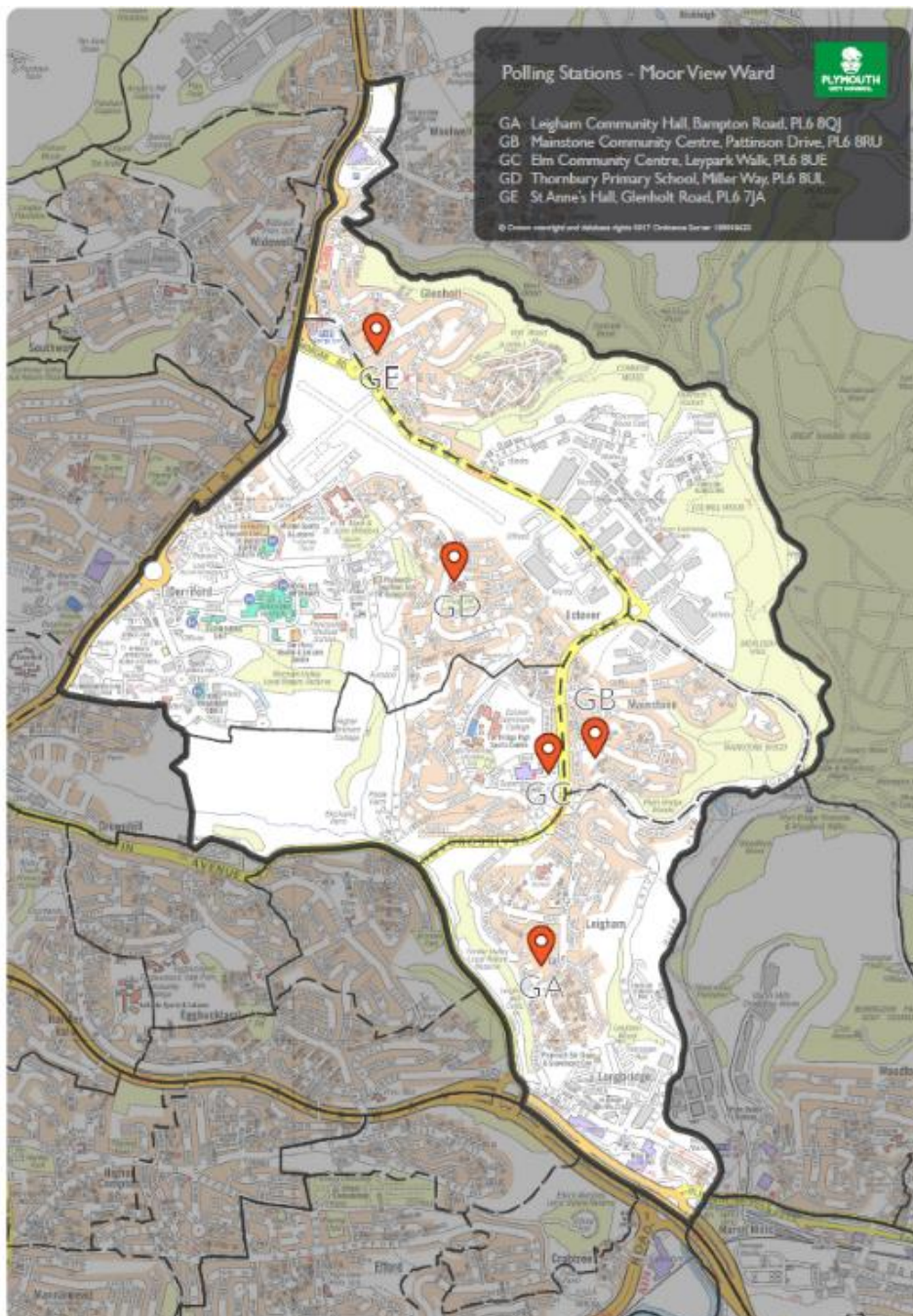
Existing Arrangements					
Polling district reference	Polling place	Electors	Postal votes	Polling station electorate	Disabled access
FA	Mary Dean Primary School/Hilltop	679	157	522	Yes – temporary ramp
FAB	Mary Dean Primary School/Hilltop	992	766	Yes – temporary ramp	
FB	Mobile Unit at Dunnet Road	1,317	312	1,005	Yes*
FC	Southway Youth Centre	1,165	197	968	Yes
FD	Beechwood Primary School	1,380	306	1,074	Yes
FE	Widewell Primary School	1,451	296	1,155	Yes
FF	Church of the Holy Spirit	2,187	460	1,727	Yes
FG	Mobile Unit at Hessary Drive	808	125	683	Yes*

\*All mobile polling stations used are suitably equipped to enable access for all voters, i.e. ramps and handrails for disabled access. However, there are still ongoing concerns due to inherent characteristics of mobile polling stations, i.e. narrow entrance, limited area for movement.



## MOOR VIEW WARD

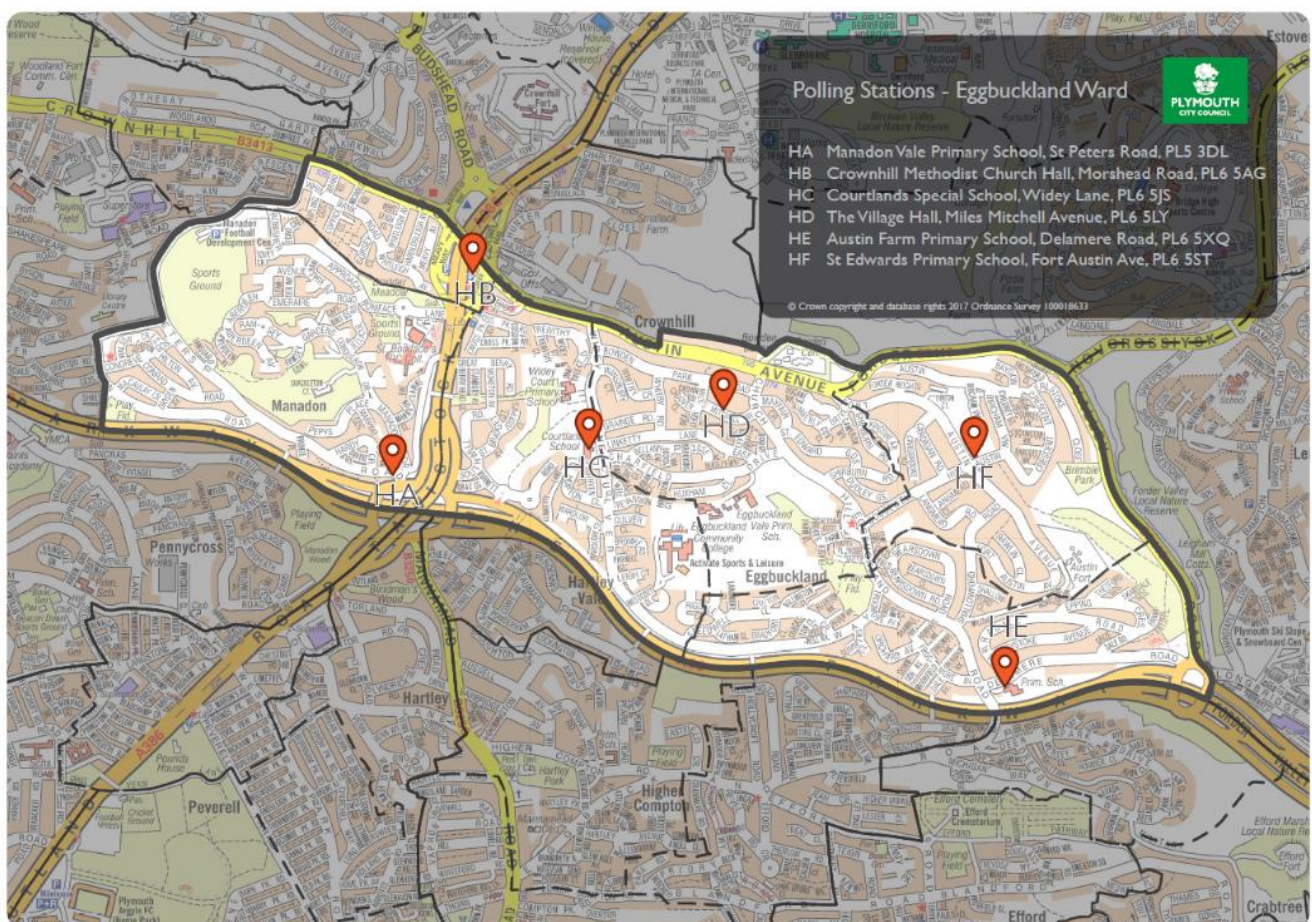
Existing arrangements					
Polling district reference	Polling place	Electors	Postal votes	Polling station electorate	Disabled access
GA	Leigham Community Hall	2,233	376	1,857	Yes
GB	Mainstone Sports & Social Club	1,206	228	978	Yes
GC	Elm Community Centre	2,061	420	1,641	Yes
GD	Thornbury Primary School	2,573	490	2,083	Yes
GE	St. Annes Church Hall - Glenholt	1,823	411	1,412	Yes





## EGGBUCKLAND WARD

Existing Arrangements					
Polling district reference	Polling place	Electors	Postal votes	Polling station electorate	Disabled access
HA	Manadon Vale Primary School	1,987	509	1,478	Yes
HB	Crownhill Methodist Church	815	163	652	Yes
HC	Courtlands Special School Academy	1,702	427	1,275	Yes
HD	The Village Hall	1,529	317	1,212	Yes
HE	Austin Farm Academy - Nursery	2,287	468	1,819	Yes
HF	St. Edwards Primary School	1,846	333	1,513	Yes



## STOKE WARD

Existing Arrangements					
Polling district Reference	Polling Place	Electors	Postal votes	Polling Station Electorate	Disabled Access
JA	St. Barnabas Church	2,691	506	2,185	Yes
JB	Stoke Damerel Centre	1,835	358	1,477	Yes
JC	Stoke Methodist Church	1,499	278	1,221	Yes
JD	Pilgrim United Reformed Church	2,808	478	2,330	Yes
JE	St. Marks Church	1,213	171	1,042	Yes



## PEVERELL WARD

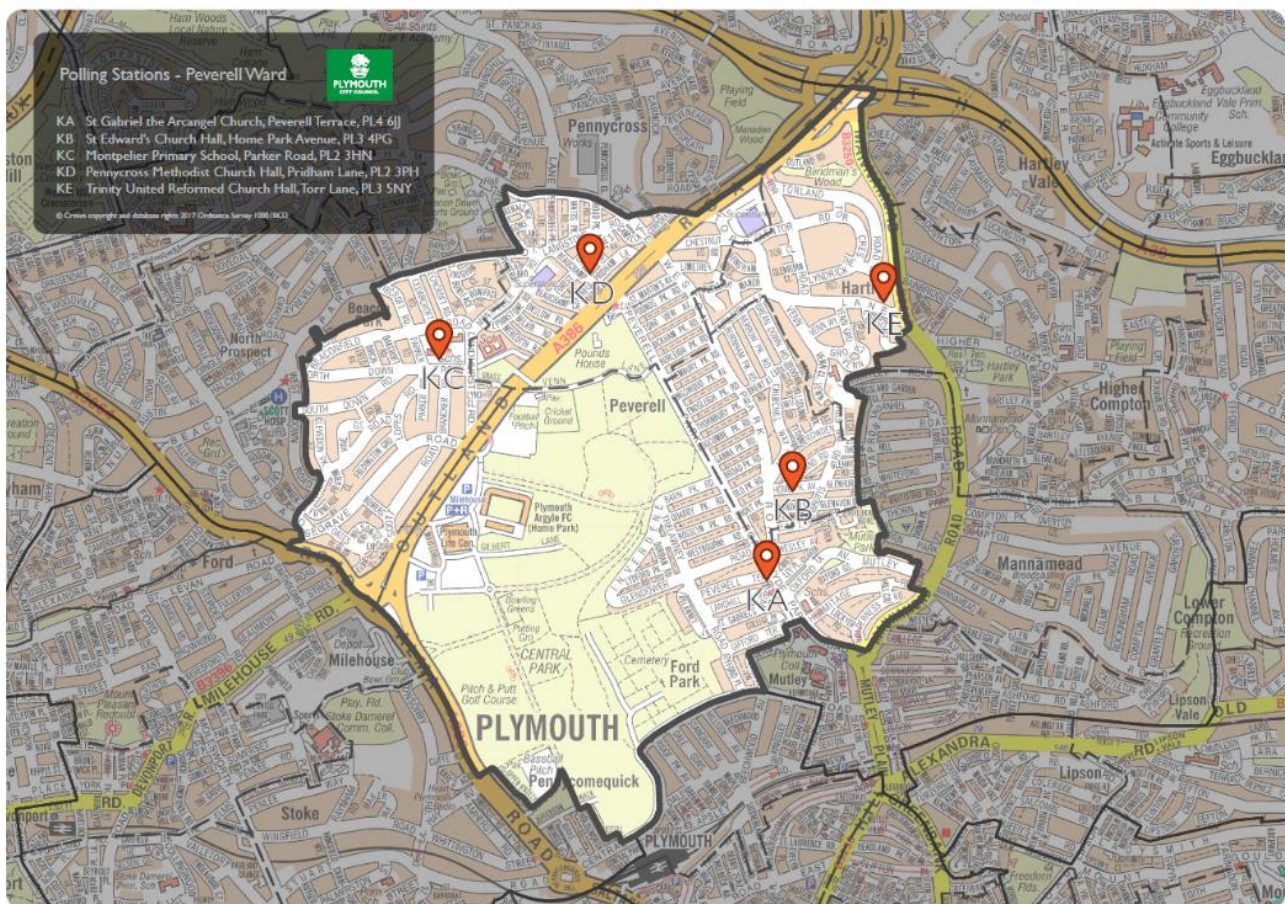
Existing arrangements					
Polling district reference	Polling place	Electors	Postal votes	Polling station electorate	Disabled access
KA	St. Gabriel The Archangel Church	2,675	484	2,191	Yes
KB	St. Edwards Church Hall	2,021	347	1,674	Yes - temporary ramp
KC	Montpelier Primary School	2,378	528	1,850	Yes
KD	Pennycross Methodist Church Hall	2,193	338	1,855	Yes
KE	Trinity United Reformed Church Hall	1,157	226	931	Yes - temporary ramp

**Montpelier Primary School - KC**

The last elections brought about comments regarding the continued suitability of this polling station due to the limited size of the polling room and impact of the poll on the running of the school.

**Pennycross Methodist Church Hall - KD**

The 2017 elections brought about a comment about the poor accessibility of this polling station, due to its location in a narrow cul-de-sac, and the shortage of amenities for elections staff.



# COMPTON WARD

Existing arrangements					
Polling district reference	Polling place	Electors	Postal votes	Polling station electorate	Disabled access
LA	Mobile Unit at Kneelee Gardens	817	117	700	Yes*
LB	Compton C of E Primary School	1,699	372	1,327	Yes
LC	Compton Methodist Church Hall	2,765	495	2,270	Yes
LD	Emmanuel Parish Hall	1,907	393	1,514	Yes
LE	Mutley Baptist Church - Main Hall	2,071	292	1,779	Yes

\*All mobile polling stations used are suitably equipped to enable access for all voters, i.e. ramps and handrails for disabled access. However, there are still ongoing concerns due to inherent characteristics of mobile polling stations, i.e. narrow entrance, limited area for movement.



**DRAKE WARD**

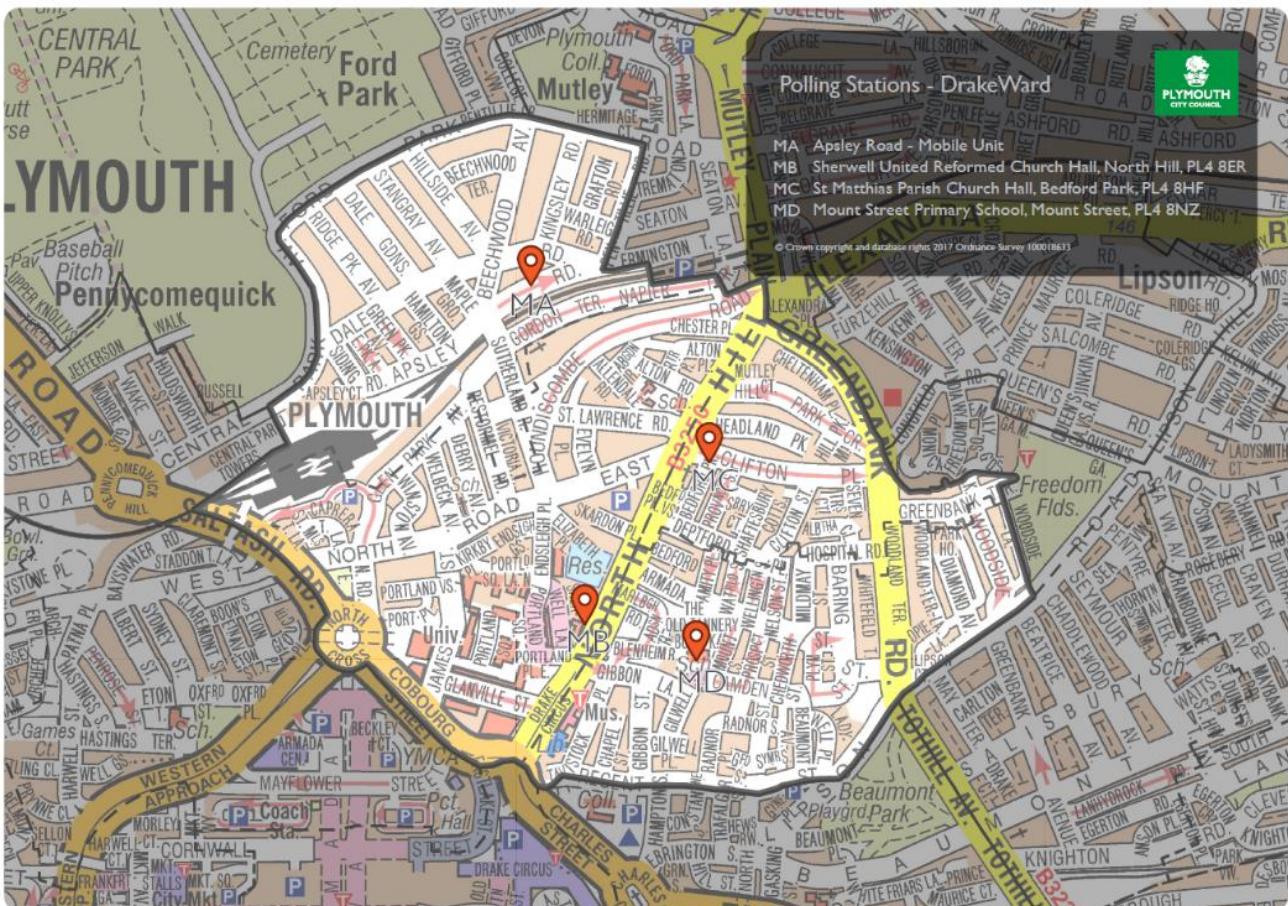
Existing arrangements					
Polling district reference	Polling place	Electors	Postal votes	Polling station electorate	Disabled access
MA	Creative Courts	1,725	241	1,484	Yes*
MB	Sherwell Church Hall	1,053	101	952	Yes
MC	Charles-with-St Matthias Church	1,084	129	955	Yes*
MD	Mount Street Primary School	1,922	203	1,719	Yes

**\* Creative Courts - MA**

The last elections brought about a comments regarding the suitability of this polling station, due to concern about access for wheelchair users.

**\* Charles with St Matthias Church - MC**

The last elections brought about some comments regarding the continued suitability of this polling station, due to concerns about the functionality of the lift enabling access to the church to disabled electors.



## ST PETER AND THE WATERFRONT

Existing Arrangements					
Polling district reference	Polling place	Electors	Postal votes	Polling station electorate	Disabled access
NA	St. Judes Church Hall	656	102	554	Yes
NB	The Burgess Hall	2,408	477	1,931	Yes
NC	St. Andrews C of E Primary School	1,662	369	1,293	Yes
ND	St. Pauls Church Hall	1,008	208	800	Yes
NE	High Street Primary Academy	1,736	311	1,425	Yes
NF	Howesons In St. Peters Church	1,284	189	1,095	Yes
NG	Frederick Street Centre	1,041	219	822	Yes
NH	Pilgrim Primary School	1,347	190	1,157	Yes

### St. Judes Church Hall - NA

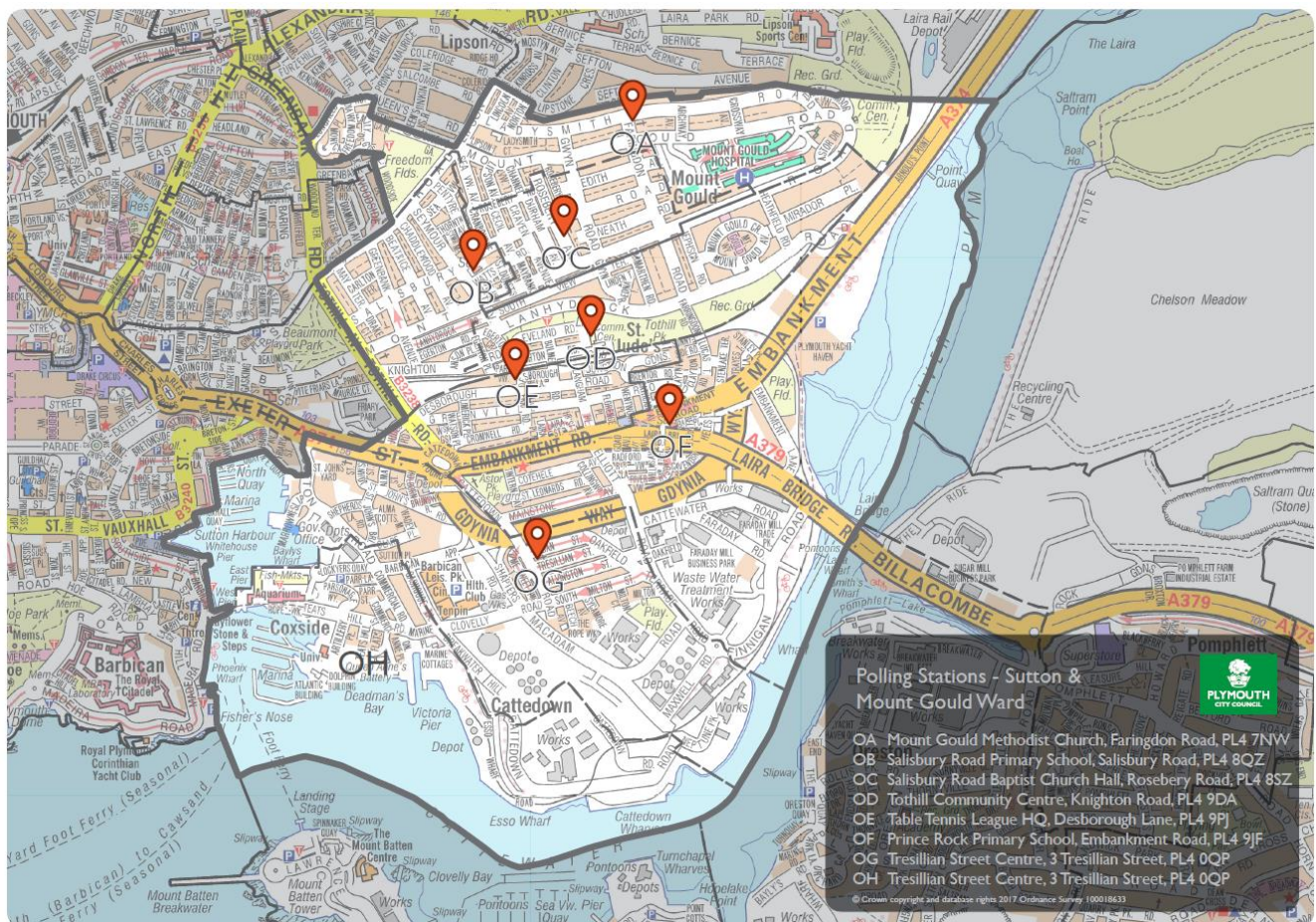
This polling station is outside of ward boundaries.



## SUTTON AND MOUNT GOULD

Existing Arrangements					
Polling district reference	Polling place	Electors	Postal votes	Polling station electorate	Disabled access
OA	Mount Gould Methodist Church	1,505	189	1,316	Yes
OB	Salisbury Road Primary School	1,488	175	1,313	Yes
OC	Salisbury Road Baptist Church Hall	1,482	191	1,291	Yes
OD	Tothill Community Centre	1,268	221	1,047	Yes
OE	Plymouth & District Table Tennis League HQ	1,067	125	942	Yes*
OF	Prince Rock Primary School	1,722	308	1,414	Yes
OG	Tresillian Street Centre	852	126	726	Yes
OH	Tresillian Street Centre	371	113	258	Yes

District OG and OH share a polling station in District OG, following the closure of the previous polling station in district OH in 2017.



## EFFORD AND LIPSON WARD

Existing Arrangements					
Polling district reference	Polling place	Electors	Postal votes	Polling station electorate	Disabled access
PA	Mobile Unit at Kensington Road	1,366	159	1,207	Yes*
PB	Lipson Vale Primary School	1,369	222	1,147	Yes
PC	Laira Green Primary School Children's Centre	1,368	198	1,170	Yes
PD	Mobile Unit at the corner of Pike Street and Old Laira Road	1,556	315	1,241	Yes*
PE	Church of Our Lady of Mount Carmel	708	123	585	Yes
PF	Mobile Unit adjacent to Humber Close	895	178	717	Yes*
PG	St. Pauls Church Community Hall	2,774	495	2,279	Yes

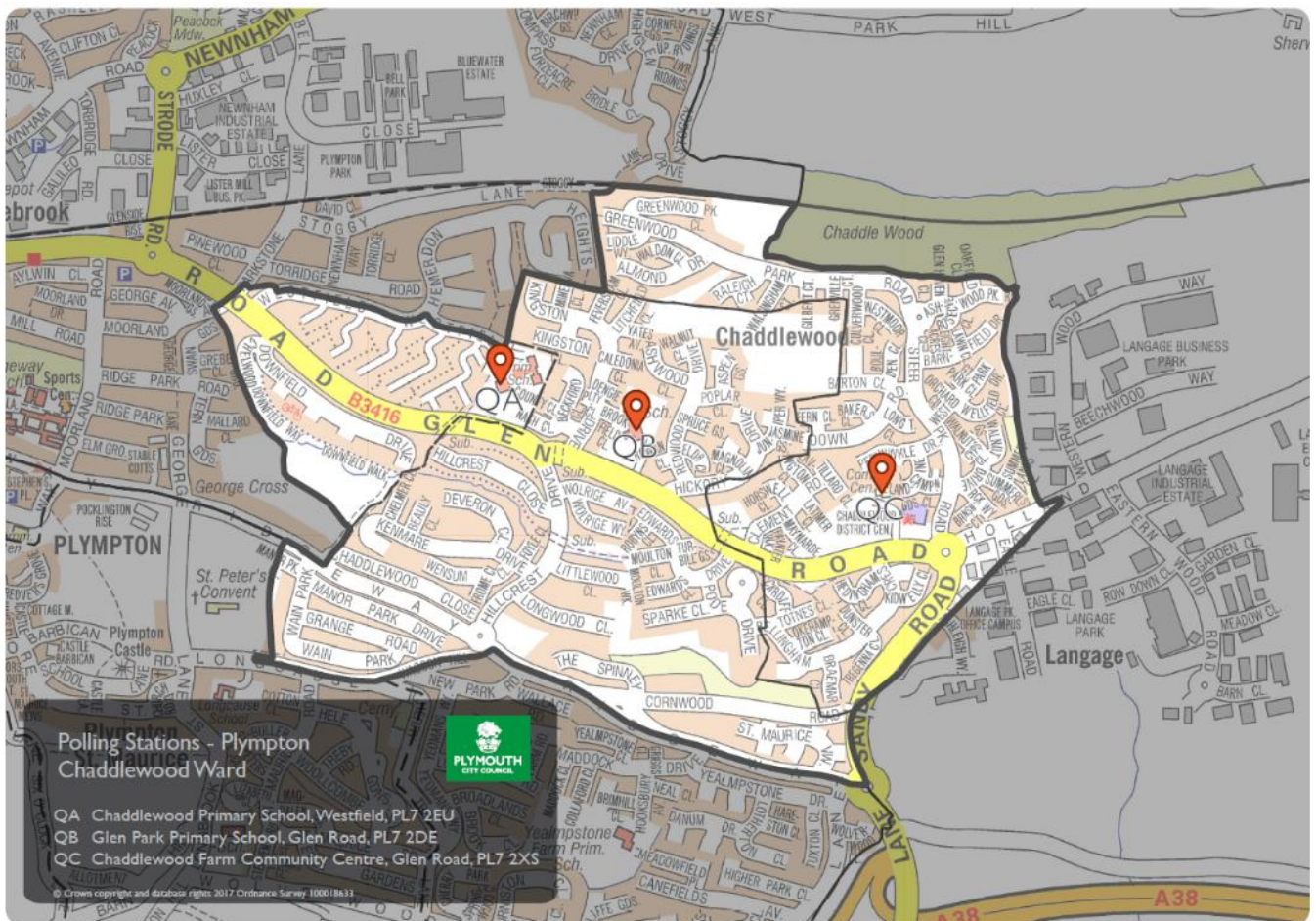
\*All mobile polling stations used are suitably equipped to enable access for all voters, i.e. ramps and handrails for disabled access. However, there are still ongoing concerns due to inherent characteristics of mobile polling stations, i.e. narrow entrance, limited area for movement.





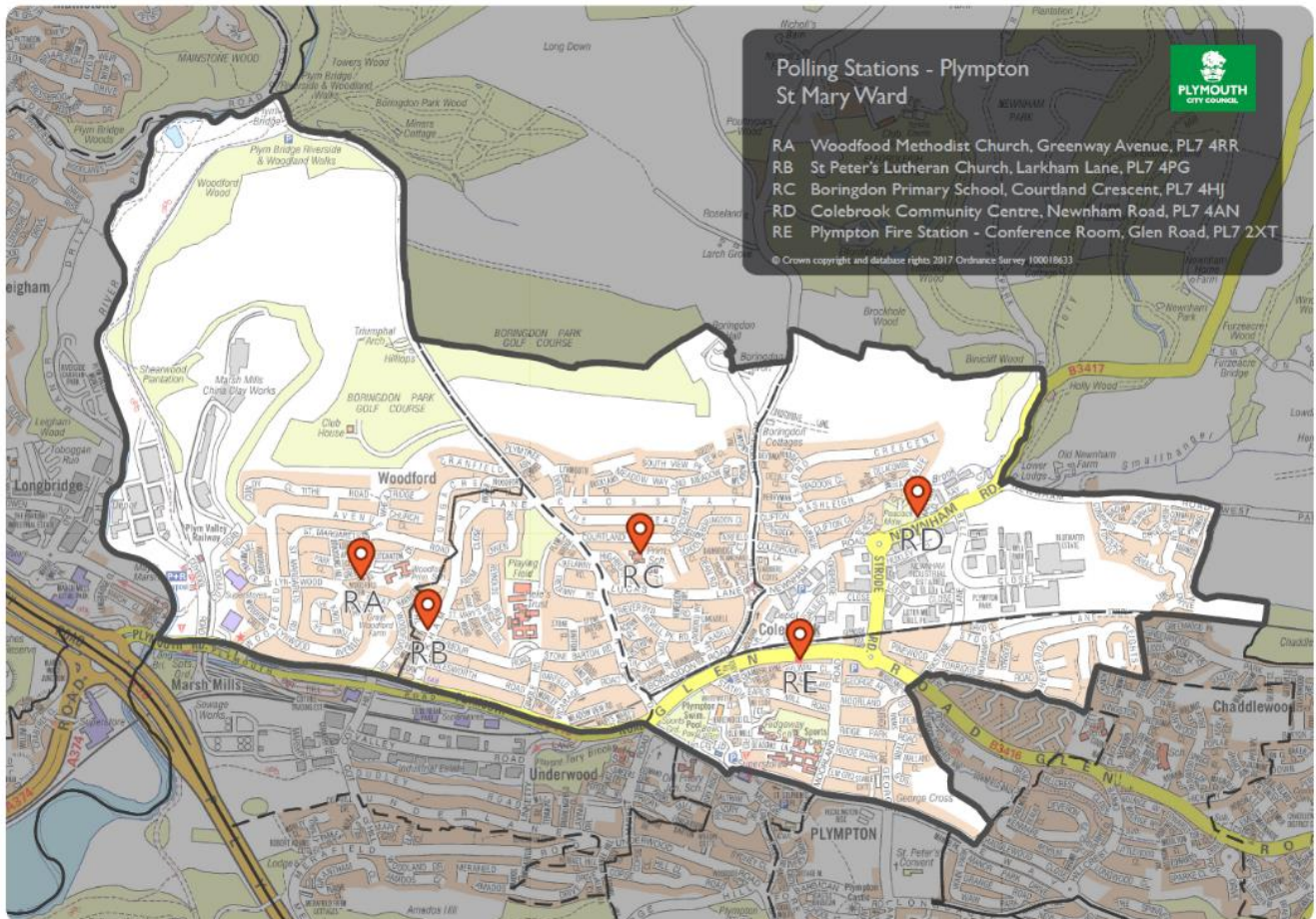
**PLYMPTON CHADDLEWOOD**

Existing arrangements					
Polling district reference	Polling Place	Electors	Postal votes	Polling station electorate	Disabled access
QA	Chaddlewood Primary School	874	159	715	Yes
QB	Glen Park Primary School	2,727	559	2,168	Yes
QC	Chaddlewood Farm Community Centre	2,472	381	2,091	Yes



## PLYMPTON ST MARY

Existing Arrangements					
Polling district reference	Polling place	Electors	Postal votes	Polling station electorate	Disabled access
RA	Woodford Methodist Church	2,200	445	1,755	Yes
RB	St. Peters Lutheran Church	1,721	347	1,374	Yes
RC	Boringdon Primary School	2,300	479	1,821	Yes
RD	Colebrook Community Centre	1,868	350	1,518	Yes
RE	Plympton Fire Station	2,059	406	1,653	Yes



## PLYMPTON ERLE

Existing arrangements					
Polling district reference	Polling place	Electors	Postal votes	Polling station electorate	Disabled access
SA	St. Mary's C of E Infants School	1,379	226	1,153	Yes
SB	Mobile Unit At Merafield Road	1,026	188	838	Yes*
SC	Rees Youth & Community Centre	851	150	701	Yes
SD	Longcause Community School	1,512	335	1,177	Yes
SE	Yealmpstone Farm Primary School	2,019	367	1,652	Yes

\*All mobile polling stations used are suitably equipped to enable access for all voters, i.e. ramps and handrails for disabled access. However, there are still ongoing concerns due to inherent characteristics of mobile polling stations, i.e. narrow entrance, limited area for movement.

### Longcause Community School – SD

The last elections brought about a representation from the management of the school regarding the continued suitability of the schools’ main hall for use as a polling station. Concerns were raised about the impact of the poll on the running of the school and the wellbeing of its pupils. However, following a visit to the school, the management has agreed to relocate the polling station to the sports hall, meaning the new arrangements will no longer compromise the wellbeing of the pupils.



## PLYMSTOCK RADFORD

Existing arrangements					
Polling district reference	Polling place	Electors	Postal votes	Polling station electorate	Disabled access
TA	Oreston Methodist Church	1,543	287	1,256	Yes
TB	Hooe Baptist Church	3,761	759	3,002	Yes
TC	Goosewell Primary School	1,120	231	889	Yes - temporary ramp
TD	Plymstock Sports Pavilion	2,305	513	1,792	Yes - temporary ramp
TE	Pomphlett Methodist Church Hall	2,072	297	1,775	Yes



## PLYMSTOCK DUNSTONE

Existing arrangements					
Polling district reference	Polling place	Electors	Postal votes	Polling station electorate	Disabled access
UA	Mobile Unit at Holmwood Avenue	1112	179	933	Yes*
UB	Staddiscombe Club Function Room	1687	238	1,449	Yes – temporary ramp
UC	Goosewell Primary School	1949	490	1,459	Yes
UD	Elburton Methodist Church	2220	514	1,706	Yes
UE	Morley Youth & Community Centre	1647	345	1,302	Yes
UF	St. Matthews Church	1177	235	942	Yes

\*All mobile polling stations used are suitably equipped to enable access for all voters, i.e. ramps and handrails for disabled access. However, there are still ongoing concerns due to inherent characteristics of mobile polling stations, i.e. narrow entrance, limited area for movement.

